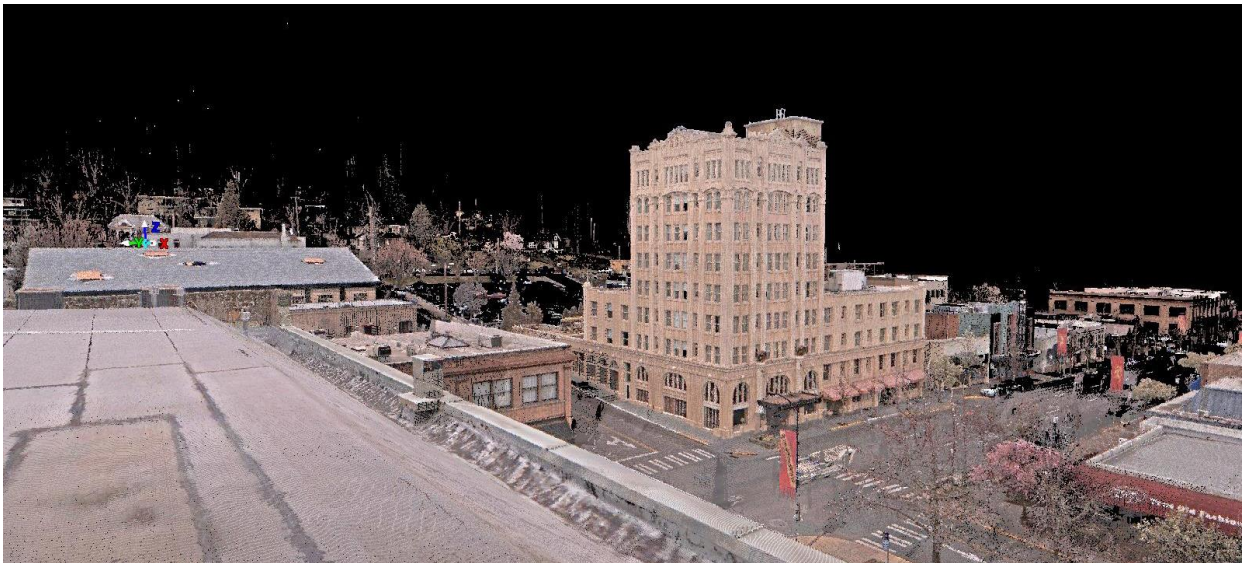


# Press Release

## Leica Geosystems, Autodesk Streamline Reality-Capture Workflows

*New hardware and software integration between the two technology leaders makes viewing and accessing 3D data faster and easier.*



NORCROSS, GA, June 4, 2015 - Construction professionals seeking to enhance their 3D models with highly accurate as-built point clouds will be able to do so quickly and easily as a result of a new technology integration between [Leica Geosystems](#) and [Autodesk](#) that will soon be available to users in the U.S. and Canada. The development allows professionals to import native point cloud data from the industry-leading Leica ScanStation P16 laser scanner directly into Autodesk ReCap software for a streamlined, simplified workflow that makes it easier for new users to reap the benefits of 3D data capture.

Combining high quality and performance with the highest environmental robustness in the market, the Leica ScanStation P16 is designed for easy entry into the world of 3D laser scanning. Its attractive price-performance ratio and user-friendly interface make it an attractive solution for all short-range applications. The one-touch scan button and wizard style software guarantee an easy workflow and enable fast data checks in the field. Combined with WLAN remote control, the Leica ScanStation P16 can be operated by any handheld device.

The Autodesk ReCap family of products and services easily translates reality-capture data into meaningful and reliable 3D information that integrates seamlessly with Autodesk software (beginning with 2014 versions). Autodesk ReCap is a free utility that converts point cloud data into the .rcs data format that can be read by all Autodesk software. ReCap 360 adds a web service to convert photos to point clouds, while ReCap Ultimate adds the ability to register point clouds from any sensor or scanner.

“Construction professionals and service providers who need survey grade, scalable point cloud processing and manipulation tools can continue to use Leica Cyclone software and CloudWorx plug-ins to view, reference, analyze, share and represent point cloud data as traditional or enhanced deliverables,” said Cathi Hayes, BIM strategy and business development director for Leica Geosystems NAFTA. “Professionals whose primary goal is to import point clouds into Autodesk ReCap software, however, can now do so directly from the Leica ScanStation P16, allowing them to extend point cloud usage to more team members. The customer can save time and costs with this more streamlined and simpler process.”

To learn more, visit <http://www.constructrealityxyz.com>.

### **Leica Geosystems – when it has to be right**

Revolutionizing the world of measurement and survey for nearly 200 years, Leica Geosystems creates complete solutions for professionals across the planet. Known for valuable products and innovative solution development, professionals in a diverse mix of industries, such as aerospace and defense, safety and security, construction, and manufacturing, trust Leica Geosystems for all their geospatial needs. With precise and accurate instruments, sophisticated software, and dependable services, Leica Geosystems delivers value every day to those shaping the future of our world.

Leica Geosystems is a brand within Hexagon Geosystems, the complete reality-capture solutions provider. With a sharp focus on information technologies that capture, measure, and visualize data, Hexagon Geosystems’ high-quality products and solutions create real digital worlds.

Leica Geosystems is part of Hexagon (Nasdaq Stockholm: HEXA B; [hexagon.com](http://hexagon.com)), a leading global provider of information technologies that drive quality and productivity improvements across geospatial and industrial enterprise applications.

### **For further information please contact:**

Hexagon Geosystems  
Monica Miller Rodgers  
Heinrich-Wild-Strasse  
CH-9435 Heerbrugg  
Phone: +41 71 727 3534  
Mobile: +41 79 945 87 43  
[monica.miller-rodgers@hexagon.com](mailto:monica.miller-rodgers@hexagon.com)